



**Rabbi Sholem Fishbane**  
Kashruth Administrator

# Chicago Rabbinical Council

2701 West Howard Street  
Chicago, IL 60645  
Ph (773) 465-3900 Fax: (773) 465-6929  
[www.crcweb.org](http://www.crcweb.org)

January 14, 2010

Total # Products on Certificate: 354

## KASHRUTH CERTIFICATION

This is to certify that the following products, produced by:

**Fontarome Chemical, St. Francis, WI**

are under the Kashruth certification of the cRc (Chicago Rabbinical Council).

10763	Acetoin Natural	Pareve	With cRc symbol	UKD: CC2144261
10765	4 Acetoxy Phenyl-2-Butanone	Pareve	With cRc symbol	UKD: CC2016479
10788	Acrolein DEA	Pareve	With cRc symbol	UKD: CC2028224
10795	Allyl Acetone	Pareve	With cRc symbol	UKD: CC2028030
10809	Allyl Anthranilate	Pareve	With cRc symbol	UKD: CC2028031
10830	Allyl Cinnamate	Pareve	With cRc symbol	UKD: CC2028032
10837	Allyl Ethyl-2-butyrate	Pareve	With cRc symbol	UKD: CC2010213
10858	Allyl Phenyl Acetate	Pareve	With cRc symbol	UKD: CC2028033
10865	Allyl Propionate	Pareve	With cRc symbol	UKD: CC2028034
10900	n-Amyl Acetate	Pareve	With cRc symbol	UKD: CC2037296
10907	n-Amyl alcohol	Pareve	With cRc symbol	UKD: CC2028029
10914	6-Amyl Alpha Pyrone	Pareve	With cRc symbol	UKD: CC2028152
10921	Amyl Benzoate	Pareve	With cRc symbol	UKD: CC2028035
10942	Benzaldehyde Diethyl Acetal	Pareve	With cRc symbol	UKD: CC2053172
10956	Benzylaldehyde Natural	Pareve	With cRc symbol	UKD: CC2021746
10984	Benzyl Alcohol	Pareve	With cRc symbol	UKD: CC2145509

Note: The UKD is an identification number assigned by the cRc for global tracking.

**Expiration Date: 12/31/2010.**

For up-to-date certification information please visit [www.crcweb.org](http://www.crcweb.org)

cRc ID: #44

Rabbi Sholem Fishbane  
Kashruth Administrator



**Rabbi Sholem Fishbane**  
Kashruth Administrator

# Chicago Rabbinical Council

2701 West Howard Street  
Chicago, IL 60645  
Ph (773) 465-3900 Fax: (773) 465-6929  
[www.crcweb.org](http://www.crcweb.org)

January 14, 2010

## Fontarome Chemical- Kosher when bearing cRc symbol

Total # Products on Certificate: 354

10991	Benzyl Butyrate	Pareve	With cRc symbol	UKD: CC2028087
11005	Benzyl Formate	Pareve	With cRc symbol	UKD: CC2028143
11012	Benzyl Laurate	Pareve	With cRc symbol	UKD: CC2028036
11047	Bornyl Isovalerate	Pareve	With cRc symbol	UKD: CC2028037
11054	2-Bromobutane	Pareve	With cRc symbol	UKD: CC2013762
11056	6 Bromohexanoic Acid	Pareve	With cRc symbol	UKD: CC2119135
11092	Butyl Anthranilate	Pareve	With cRc symbol	UKD: CC2015282
11096	n-Butyl Benzyl Ether	Pareve	With cRc symbol	UKD: CC2028038
11117	Butyl T2 Decenoate	Pareve	With cRc symbol	UKD: CC2028071
11124	n-Butyl Caproate (n-Butyl Hexanoate)	Pareve	With cRc symbol	UKD: CC2028141
11138	Butyl Lactate	Pareve	With cRc symbol	UKD: CC2028104
11145	n-Butyl 2-Methylbutyrate	Pareve	With cRc symbol	UKD: CC2028127
11159	N-Butyl Propionate	Pareve	With cRc symbol	UKD: CC2028146
11166	n-Butyl Sorbate	Pareve	With cRc symbol	UKD: CC2009713
11173	Butyl Undecylenoate	Pareve	With cRc symbol	UKD: CC2028148
11180	Butyl Oxynaphthalene	Pareve	With cRc symbol	UKD: CC2028040
11215	Caproic Acid, Natural	Pareve	With cRc symbol	UKD: CC2028124
11223	Trans-Capsaicin (94%)	Pareve	With cRc symbol	UKD: CC2119107
11250	2-Chloroheptane	Pareve	With cRc symbol	UKD: CC2028094
11271	Cinnamyl Butyrate	Pareve	With cRc symbol	UKD: CC2028088
11285	Citraniline	Pareve	With cRc symbol	UKD: CC2009712
11306	Citronellic Acid	Pareve	With cRc symbol	UKD: CC2028095

Note: The UKD is an identification number assigned by the cRc for global tracking.

**Expiration Date: 12/31/2010.**

For up-to-date certification information please visit [www.crcweb.org](http://www.crcweb.org)

cRc ID: #44

Page 2 of 17

Rabbi Sholem Fishbane  
Kashruth Administrator



**Rabbi Sholem Fishbane**  
Kashruth Administrator

# Chicago Rabbinical Council

2701 West Howard Street  
Chicago, IL 60645  
Ph (773) 465-3900 Fax: (773) 465-6929  
[www.crcweb.org](http://www.crcweb.org)

January 14, 2010

## Fontarome Chemical- Kosher when bearing cRc symbol

Total # Products on Certificate: 354

11355	m-Cresyl Acetate	Pareve	With cRc symbol	UKD: CC2028041
11362	p-Cresyl Isovalerate	Pareve	With cRc symbol	UKD: CC2028126
11404	Cyclohexyl Butyrate	Pareve	With cRc symbol	UKD: CC2028042
11411	Cyclohexyl Valerate	Pareve	With cRc symbol	UKD: CC2028043
11418	T2 T4 Decadienal	Pareve	With cRc symbol	UKD: CC2028182
11424	Diacetyl, Natural 99+%	Pareve	With cRc symbol	UKD: CC2145698
11426	Diacetyl, Natural	Pareve	With cRc symbol	UKD: CC2143619
11427	Diacetyl, Natural, 4% in Medium Chain Triglycerides	Pareve	With cRc symbol	UKD: CC2144157
11429	Diacetyl, 98+%	Pareve	With cRc symbol	UKD: CC2144160
11430	Diacetyl, 4% in Medium Chain Triglycerides	Pareve	With cRc symbol	UKD: CC2143234
11432	Aldehyde C10 (1-decenal)	Pareve	With cRc symbol	UKD: CC2028085
11436	Delta-Decalactone	Pareve	With cRc symbol	UKD: CC2119103
11439	Capric Acid, Natural	Pareve	With cRc symbol	UKD: CC2028123
11440	Milk Lactone Prime	Pareve	With cRc symbol	UKD: CC2024259
11453	T2 Decenal	Pareve	With cRc symbol	UKD: CC2028234
11460	5+6 Decenoic Acid (Milk Lactone)	Pareve	With cRc symbol	UKD: CC2028776
11467	T2 Decenoic Acid	Pareve	With cRc symbol	UKD: CC2028139
11509	Diethyl Succinate	Pareve	With cRc symbol	UKD: CC2028147
11544	T2 Dodecenal	Pareve	With cRc symbol	UKD: CC2028235
11551	4 Ethoxy Benzylaldehyde	Pareve	With cRc symbol	UKD: CC2028044
11565	Ethyl Acetoacetate	Pareve	With cRc symbol	UKD: CC2028777
11572	Ethyl Acetoxy-3-Hexanoate	Pareve	With cRc symbol	UKD: CC2028121

Note: The UKD is an identification number assigned by the cRc for global tracking.

**Expiration Date: 12/31/2010.**

For up-to-date certification information please visit [www.crcweb.org](http://www.crcweb.org)

cRc ID: #44

Page 3 of 17

Rabbi Sholem Fishbane  
Kashruth Administrator



**Rabbi Sholem Fishbane**  
Kashruth Administrator

# Chicago Rabbinical Council

2701 West Howard Street  
Chicago, IL 60645  
Ph (773) 465-3900 Fax: (773) 465-6929  
[www.crcweb.org](http://www.crcweb.org)

January 14, 2010

## Fontarome Chemical- Kosher when bearing cRc symbol

Total # Products on Certificate: 354

11586	Benzyl Ethyl Ether	Pareve	With cRc symbol	UKD: CC2028236
11610	Ethyl Butyrate	Pareve	With cRc symbol	UKD: CC2136771
11614	Ethyl Butyrl Cinnamate	Pareve	With cRc symbol	UKD: CC2028045
11621	Ethyl Crotonate	Pareve	With cRc symbol	UKD: CC2028091
11624	Ethyl Citronellate	Pareve	With cRc symbol	UKD: CC2029045
11628	Ethyl T2 C4 Decadienoate	Pareve	With cRc symbol	UKD: CC2028237
11635	Ethyl Caprate	Pareve	With cRc symbol	UKD: CC2028089
11642	Ethyl C4 Decenoate	Pareve	With cRc symbol	UKD: CC2028093
11649	Ethyl T2 Decenoate	Pareve	With cRc symbol	UKD: CC2028092
11663	Ethyl T2 Hexenoate	Pareve	With cRc symbol	UKD: CC2028238
11670	Ethyl T3 Hexenoate	Pareve	With cRc symbol	UKD: CC2028239
11677	Ethyl Hydroxy-3-Butyrate	Pareve	With cRc symbol	UKD: CC2028096
11684	Ethyl 3-Hydroxy Hexanoate	Pareve	With cRc symbol	UKD: CC2028184
11698	Ethyl 3-Methyl-3-Hydroxy-Octanoate	Pareve	With cRc symbol	UKD: CC2028307
11700	Ethyl Isovalerate	Pareve	With cRc symbol	UKD: CC2144948
11705	Ethyl Methyl-2-Butyrate	Pareve	With cRc symbol	UKD: CC2028240
11719	Ethyl T2 Octenoate	Pareve	With cRc symbol	UKD: CC2028241
11722	Ethyl Oleate	Pareve	With cRc symbol	UKD: CC2140898
11726	Ethyl Palmitate	Pareve	With cRc symbol	UKD: CC2028107
11730	2-Ethylpyrazine	Pareve	With cRc symbol	UKD: CC2141921
11733	Ethyl Sorbate	Pareve	With cRc symbol	UKD: CC2053174
11740	Ethyl Stearate	Pareve	With cRc symbol	UKD: CC2028086

Note: The UKD is an identification number assigned by the cRc for global tracking.

**Expiration Date: 12/31/2010.**

For up-to-date certification information please visit [www.crcweb.org](http://www.crcweb.org)

cRc ID: #44

Page 4 of 17

Rabbi Sholem Fishbane  
Kashruth Administrator



**Rabbi Sholem Fishbane**  
Kashruth Administrator

# Chicago Rabbinical Council

2701 West Howard Street  
Chicago, IL 60645  
Ph (773) 465-3900 Fax: (773) 465-6929  
[www.crcweb.org](http://www.crcweb.org)

January 14, 2010

## Fontarome Chemical- Kosher when bearing cRc symbol

Total # Products on Certificate: 354

11747	Ethyl Tiglate	Pareve	With cRc symbol	UKD: CC2028065
11754	Ethyl Undecylenoate	Pareve	With cRc symbol	UKD: CC2028778
11761	Ethyl Valerate	Pareve	With cRc symbol	UKD: CC2028149
11766	Ethyl Vanillate	Pareve	With cRc symbol	UKD: CC2027167
11775	Ethyl Vanillin PG Acetal	Pareve	With cRc symbol	UKD: CC2028046
11824	Furfuryl Propionate	Pareve	With cRc symbol	UKD: CC2028066
11838	Geranic Acid	Pareve	With cRc symbol	UKD: CC2027449
11868	Grapefruit Oil Replacement	Pareve	With cRc symbol	UKD: CC2117958
11873	T2 T4 Heptadienal	Pareve	With cRc symbol	UKD: CC2028136
11887	n-Heptanal (C7 Aldehyde)	Pareve	With cRc symbol	UKD: CC2028099
11901	2-Heptanol	Pareve	With cRc symbol	UKD: CC2028097
11915	C4 Heptenal	Pareve	With cRc symbol	UKD: CC2028178
11922	T2 Heptenal	Pareve	With cRc symbol	UKD: CC2028177
11924	T2 Heptenal, 96%	Pareve	With cRc symbol	UKD: CC2141906
11929	T4 Heptenal	Pareve	With cRc symbol	UKD: CC2028100
11936	n-Heptyl Acetate	Pareve	With cRc symbol	UKD: CC2028081
11950	Heptyl Butyrate	Pareve	With cRc symbol	UKD: CC2028076
11957	Heptyl Hexanoate (Heptyl Caproate)	Pareve	With cRc symbol	UKD: CC2028242
11971	T2 T4 Hexadienal	Pareve	With cRc symbol	UKD: CC2028175
11978	T2 T4 Hexadienol	Pareve	With cRc symbol	UKD: CC2014008
11985	1-Hexanal	Pareve	With cRc symbol	UKD: CC2136828
11992	2 Hexanol	Pareve	With cRc symbol	UKD: CC2028047

Note: The UKD is an identification number assigned by the cRc for global tracking.

**Expiration Date: 12/31/2010.**

For up-to-date certification information please visit [www.crcweb.org](http://www.crcweb.org)

cRc ID: #44

Page 5 of 17

Rabbi Sholem Fishbane  
Kashruth Administrator



**Rabbi Sholem Fishbane**  
Kashruth Administrator

# Chicago Rabbinical Council

2701 West Howard Street  
Chicago, IL 60645  
Ph (773) 465-3900 Fax: (773) 465-6929  
[www.crcweb.org](http://www.crcweb.org)

January 14, 2010

## Fontarome Chemical- Kosher when bearing cRc symbol

Total # Products on Certificate: 354

12013	T3 Hexen-1-Chloride	Pareve	With cRc symbol	UKD: CC2028243
12020	T2 Hexenal	Pareve	With cRc symbol	UKD: CC2028244
12027	T2 Hexenal Diethyl Acetal	Pareve	With cRc symbol	UKD: CC2028245
12034	C3 Hexenoic Acid	Pareve	With cRc symbol	UKD: CC2028246
12041	T2 Hexenoic Acid	Pareve	With cRc symbol	UKD: CC2028247
12048	T3 Hexenoic Acid	Pareve	With cRc symbol	UKD: CC2028103
12055	Hexenol 50/50 beta gamma	Pareve	With cRc symbol	UKD: CC2028048
12062	Hexenol 80/20 beta gamma	Pareve	With cRc symbol	UKD: CC2028049
12069	C3 Hexenol	Pareve	With cRc symbol	UKD: CC2028779
12076	T2 Hexenol	Pareve	With cRc symbol	UKD: CC2053176
12083	T3 Hexenol	Pareve	With cRc symbol	UKD: CC2028248
12090	B y Hexenyl Acetate	Pareve	With cRc symbol	UKD: CC2028249
12097	C3 Hexenyl Acetate	Pareve	With cRc symbol	UKD: CC2052799
12104	T2 Hexenyl Acetate	Pareve	With cRc symbol	UKD: CC2028252
12111	C3 Hexenyl Anthranilate	Pareve	With cRc symbol	UKD: CC2028253
12118	C3 Hexenyl Benzoate	Pareve	With cRc symbol	UKD: CC2028116
12125	C3 Hexenyl Butyrate	Pareve	With cRc symbol	UKD: CC2028254
12132	T2 Hexenyl Butyrate	Pareve	With cRc symbol	UKD: CC2028255
12139	C3 Hexen-1-Chloride	Pareve	With cRc symbol	UKD: CC2028129
12146	B y Hexenyl Formate	Pareve	With cRc symbol	UKD: CC2028256
12150	C3 Hexenyl Crotonate	Pareve	With cRc symbol	UKD: CC2041317
12153	C3 Hexenyl Formate	Pareve	With cRc symbol	UKD: CC2028257

Note: The UKD is an identification number assigned by the cRc for global tracking.

**Expiration Date: 12/31/2010.**

For up-to-date certification information please visit [www.crcweb.org](http://www.crcweb.org)

cRc ID: #44

Page 6 of 17

Rabbi Sholem Fishbane  
Kashruth Administrator



**Rabbi Sholem Fishbane**  
Kashruth Administrator

# Chicago Rabbinical Council

2701 West Howard Street  
Chicago, IL 60645  
Ph (773) 465-3900 Fax: (773) 465-6929  
[www.crcweb.org](http://www.crcweb.org)

January 14, 2010

## Fontarome Chemical- Kosher when bearing cRc symbol

Total # Products on Certificate: 354

12167	C3 Hexenyl Caproate	Pareve	With cRc symbol	UKD: CC2028258
12174	T2 Hexenyl Hexanoate	Pareve	With cRc symbol	UKD: CC2028259
12181	C3 Hexenyl Hexenoate	Pareve	With cRc symbol	UKD: CC2028260
12188	C3 Hexenyl T2 Hexenoate	Pareve	With cRc symbol	UKD: CC2028261
12202	C3 Hexenyl Isobutyrate	Pareve	With cRc symbol	UKD: CC2028112
12209	C3 Hexenyl Isovalerate	Pareve	With cRc symbol	UKD: CC2028262
12216	C3 Hexenyl Lactate	Pareve	With cRc symbol	UKD: CC2028263
12223	C3 Hexenyl 2-methylbutyrate	Pareve	With cRc symbol	UKD: CC2028264
12230	C3 Hexenyl Octanoate	Pareve	With cRc symbol	UKD: CC2028115
12237	C3 Hexenyl Phenyl Acetate	Pareve	With cRc symbol	UKD: CC2028265
12244	C3 Hexenyl Propionate	Pareve	With cRc symbol	UKD: CC2028117
12258	C3 Hexenyl Salicylate	Pareve	With cRc symbol	UKD: CC2028050
12265	Hexyl Acetate	Pareve	With cRc symbol	UKD: CC2053307
12272	Hexanol (hexyl alcohol)	Pareve	With cRc symbol	UKD: CC2028102
12286	Hexyl T2 Butenoate (Hexyl Crotonate)	Pareve	With cRc symbol	UKD: CC2028119
12293	Hexyl Caproate	Pareve	With cRc symbol	UKD: CC2028142
12300	Hexyl Lactate	Pareve	With cRc symbol	UKD: CC2028111
12307	Hexyl 2-Methyl Butyrate	Pareve	With cRc symbol	UKD: CC2028120
12314	Hexyl Octanoate	Pareve	With cRc symbol	UKD: CC2028780
12321	Hexyl Propionate	Pareve	With cRc symbol	UKD: CC2053184
12384	Isoamyl Alcohol	Pareve	With cRc symbol	UKD: CC2028084
12391	Isoamyl Benzoate	Pareve	With cRc symbol	UKD: CC2028781

Note: The UKD is an identification number assigned by the cRc for global tracking.

**Expiration Date: 12/31/2010.**

For up-to-date certification information please visit [www.crcweb.org](http://www.crcweb.org)

Rabbi Sholem Fishbane  
Kashruth Administrator



**Rabbi Sholem Fishbane**  
Kashruth Administrator

# Chicago Rabbinical Council

2701 West Howard Street  
Chicago, IL 60645  
Ph (773) 465-3900 Fax: (773) 465-6929  
[www.crcweb.org](http://www.crcweb.org)

January 14, 2010

## Fontarome Chemical- Kosher when bearing cRc symbol

Total # Products on Certificate: 354

12395	Isoamyl Butyrate	Pareve	With cRc symbol	UKD: CC2119561
12405	Isoamyl 2-Methyl Butyrate	Pareve	With cRc symbol	UKD: CC2028105
12412	Isoamyl Octanoate	Pareve	With cRc symbol	UKD: CC2028051
12426	Isobutyl Benzoate	Pareve	With cRc symbol	UKD: CC2028782
12440	Isobutyl Butyrate	Pareve	With cRc symbol	UKD: CC2053186
12442	Isoamyl Cinnamate	Pareve	With cRc symbol	UKD: CC2123358
12447	Isobutyl Hexanoate (Isobutyl Caproate)	Pareve	With cRc symbol	UKD: CC2028131
12454	Isobutyl Cinnamate	Pareve	With cRc symbol	UKD: CC2016480
12461	Isobutyl Crotonate	Pareve	With cRc symbol	UKD: CC2028052
12468	Isobutyl Formate	Pareve	With cRc symbol	UKD: CC2053188
12475	Isobutyl 2-Methyl Butyrate	Pareve	With cRc symbol	UKD: CC2028078
12482	Isobutyraldehyde, Natural	Pareve	With cRc symbol	UKD: CC2028073
12505	4-Isopropoxy Aniline	Pareve	With cRc symbol	UKD: CC2052426
12517	Isopropyl Cinnamate	Pareve	With cRc symbol	UKD: CC2053190
12531	Isovaleraldehyde, Natural	Pareve	With cRc symbol	UKD: CC2028074
12538	Isovaleraldehyde	Pareve	With cRc symbol	UKD: CC2056221
12545	3-Methyl Butyric Acid (Isovaleric Acid)	Pareve	With cRc symbol	UKD: CC2136718
12559	Cis Jasmone	Pareve	With cRc symbol	UKD: CC2028122
12587	Leaf Acetal	Pareve	With cRc symbol	UKD: CC2028266
12608	Linalyl Isovalerate	Pareve	With cRc symbol	UKD: CC2028267
12640	Maltyl Isobutyrate	Pareve	With cRc symbol	UKD: CC2029046
12642	Maltyl Propionate	Pareve	With cRc symbol	UKD: CC2026650

Note: The UKD is an identification number assigned by the cRc for global tracking.

**Expiration Date: 12/31/2010.**

For up-to-date certification information please visit [www.crcweb.org](http://www.crcweb.org)

cRc ID: #44

Page 8 of 17

Rabbi Sholem Fishbane  
Kashruth Administrator



**Rabbi Sholem Fishbane**  
Kashruth Administrator

# Chicago Rabbinical Council

2701 West Howard Street  
Chicago, IL 60645  
Ph (773) 465-3900 Fax: (773) 465-6929  
[www.crcweb.org](http://www.crcweb.org)

January 14, 2010

## Fontarome Chemical- Kosher when bearing cRc symbol

Total # Products on Certificate: 354

12657	Methional	Pareve	With cRc symbol	UKD: CC2028151
12664	Methionol (3-Methylthiopropanol)	Pareve	With cRc symbol	UKD: CC2028268
12678	2-Methoxy Phenyl Acetate	Pareve	With cRc symbol	UKD: CC2024258
12685	Methyl Acetate	Pareve	With cRc symbol	UKD: CC2142519
12713	p-Methyl Benzyl Acetate	Pareve	With cRc symbol	UKD: CC2028269
12734	2-Methyl Butanal, Natural	Pareve	With cRc symbol	UKD: CC2028053
12776	2-Methyl Butyl Acetate	Pareve	With cRc symbol	UKD: CC2028077
12783	2-Methyl Butyl Butyrate	Pareve	With cRc symbol	UKD: CC2028128
12797	2-Methyl Butyl Isovalerate	Pareve	With cRc symbol	UKD: CC2028130
12811	Methyl Butyrate	Pareve	With cRc symbol	UKD: CC2028140
12818	2-Methyl Butyric Acid	Pareve	With cRc symbol	UKD: CC2028270
12825	Methyl Caproate (methyl hexanoate)	Pareve	With cRc symbol	UKD: CC2028090
12832	Methyl Citronellate	Pareve	With cRc symbol	UKD: CC2028271
12839	Methyl Crotonate	Pareve	With cRc symbol	UKD: CC2027908
12853	Methyl T2 Decenoate	Pareve	With cRc symbol	UKD: CC2028098
12860	Methyl Heptanoate	Pareve	With cRc symbol	UKD: CC2028067
12867	2-Methyl Heptanoic Acid	Pareve	With cRc symbol	UKD: CC2028272
12874	Methyl Heptyl Ketone	Pareve	With cRc symbol	UKD: CC2028106
12881	Methyl T2 Hexenoate	Pareve	With cRc symbol	UKD: CC2028273
12888	Methyl T3 Hexenoate	Pareve	With cRc symbol	UKD: CC2028274
12902	Methyl 3 Hydroxy Hexanoate	Pareve	With cRc symbol	UKD: CC2028183
12916	Methyl Isobutyrate	Pareve	With cRc symbol	UKD: CC2053178

Note: The UKD is an identification number assigned by the cRc for global tracking.

**Expiration Date: 12/31/2010.**

For up-to-date certification information please visit [www.crcweb.org](http://www.crcweb.org)

cRc ID: #44

Page 9 of 17

Rabbi Sholem Fishbane  
Kashruth Administrator



**Rabbi Sholem Fishbane**  
Kashruth Administrator

# Chicago Rabbinical Council

2701 West Howard Street  
Chicago, IL 60645  
Ph (773) 465-3900 Fax: (773) 465-6929  
[www.crcweb.org](http://www.crcweb.org)

January 14, 2010

## Fontarome Chemical- Kosher when bearing cRc symbol

Total # Products on Certificate: 354

12923	Methyl Isovalerate	Pareve	With cRc symbol	UKD: CC2027907
12937	Methyl 4-Methoxy Benzoate	Pareve	With cRc symbol	UKD: CC2028060
12944	Methyl 2-Methyl Butyrate	Pareve	With cRc symbol	UKD: CC2028275
12964	Methyl T2 Nonenoate	Pareve	With cRc symbol	UKD: CC2053453
12965	Methyl T3 Nonenoate	Pareve	With cRc symbol	UKD: CC2028137
12969	T8 Methyl 6 Nonenoic Acid	Pareve	With cRc symbol	UKD: CC2119134
12971	E-8-Methyl-6-Nonenoyl	Pareve	With cRc symbol	UKD: CC2119114
12972	Methyl T2 Octenoate	Pareve	With cRc symbol	UKD: CC2028113
12979	3-Methyl Valeric Acid	Pareve	With cRc symbol	UKD: CC2028054
12993	2-Methyl-2-Pentenal	Pareve	With cRc symbol	UKD: CC2028176
13000	4-Methyl-2-Pentenal	Pareve	With cRc symbol	UKD: CC2028276
13014	2-Methyl-2-Pentenoic Acid, Extra	Pareve	With cRc symbol	UKD: CC2053192
13021	2-Methyl-2-Pentenoic Acid	Pareve	With cRc symbol	UKD: CC2028082
13025	5-Methyl-2-phenyl-2-hexenal	Pareve	With cRc symbol	UKD: CC2032117
13028	4-Methyl-2-phenyl-2-pentenal	Pareve	With cRc symbol	UKD: CC2032116
13035	Methyl Propionate	Pareve	With cRc symbol	UKD: CC2028079
13056	Methyl Sorbate	Pareve	With cRc symbol	UKD: CC2028110
13063	3-Methyl Thiopropylisothiocyanate	Pareve	With cRc symbol	UKD: CC2028135
13070	Methyl Tiglate	Pareve	With cRc symbol	UKD: CC2028070
13079	Monomethyl Succinate	Pareve	With cRc symbol	UKD: CC2117245
13098	T2 C6 Nonadienal	Pareve	With cRc symbol	UKD: CC2028118
13105	T2 C6 Nonadienal Diethyl Acetal	Pareve	With cRc symbol	UKD: CC2028277

Note: The UKD is an identification number assigned by the cRc for global tracking.

**Expiration Date: 12/31/2010.**

For up-to-date certification information please visit [www.crcweb.org](http://www.crcweb.org)

cRc ID: #44

Page 10 of 17

Rabbi Sholem Fishbane  
Kashruth Administrator



**Rabbi Sholem Fishbane**  
Kashruth Administrator

# Chicago Rabbinical Council

2701 West Howard Street  
Chicago, IL 60645  
Ph (773) 465-3900 Fax: (773) 465-6929  
[www.crcweb.org](http://www.crcweb.org)

January 14, 2010

## Fontarome Chemical- Kosher when bearing cRc symbol

Total # Products on Certificate: 354

13112	T2 T4 Nonadienal	Pareve	With cRc symbol	UKD: CC2028278
13119	T2 T6 Nonadienal	Pareve	With cRc symbol	UKD: CC2028279
13126	T2 C6 Nonadienol	Pareve	With cRc symbol	UKD: CC2028181
13133	2-Nonanol	Pareve	With cRc symbol	UKD: CC2028069
13135	Nonivamide	Pareve	With cRc symbol	UKD: CC2052428
13136	10% Nonivamide Solution Benzyl Alcohol	Pareve	With cRc symbol	UKD: CC2111377
13154	1-Nonen-3-ol	Pareve	With cRc symbol	UKD: CC2028171
13156	3-Nonen-2-one	Pareve	With cRc symbol	UKD: CC2023377
13161	C6 Nonenal	Pareve	With cRc symbol	UKD: CC2053180
13168	T2 Nonenal	Pareve	With cRc symbol	UKD: CC2053182
13175	C6 Nonenol	Pareve	With cRc symbol	UKD: CC2028280
13182	T2 T4 Octadienal	Pareve	With cRc symbol	UKD: CC2028144
13193	2,3-Octanedione	Pareve	With cRc symbol	UKD: CC2037295
13196	Caprylic Acid (Octanoic Acid)	Pareve	With cRc symbol	UKD: CC2028784
13203	3-Octanol	Pareve	With cRc symbol	UKD: CC2027896
13217	1-Octen-3-ol	Pareve	With cRc symbol	UKD: CC2028153
13224	2-Octen-4-one	Pareve	With cRc symbol	UKD: CC2028072
13231	1-Octen-3-yl-Acetate	Pareve	With cRc symbol	UKD: CC2028281
13238	T2 Octenal	Pareve	With cRc symbol	UKD: CC2028145
13245	T2 Octenoic Acid	Pareve	With cRc symbol	UKD: CC2028282
13252	3-Octyl Acetate	Pareve	With cRc symbol	UKD: CC2028283
13259	Octyl Alcohol	Pareve	With cRc symbol	UKD: CC2029048

Note: The UKD is an identification number assigned by the cRc for global tracking.

**Expiration Date: 12/31/2010.**

For up-to-date certification information please visit [www.crcweb.org](http://www.crcweb.org)

cRc ID: #44

Page 11 of 17

Rabbi Sholem Fishbane  
Kashruth Administrator



**Rabbi Sholem Fishbane**  
Kashruth Administrator

# Chicago Rabbinical Council

2701 West Howard Street  
Chicago, IL 60645  
Ph (773) 465-3900 Fax: (773) 465-6929  
[www.crcweb.org](http://www.crcweb.org)

January 14, 2010

## Fontarome Chemical- Kosher when bearing cRc symbol

Total # Products on Certificate: 354

13262	3-Octyl Formate	Pareve	With cRc symbol	UKD: CC2032960
13266	n-Octyl Isobutyrate	Pareve	With cRc symbol	UKD: CC2028138
13273	Octyl 2-Methyl Butyrate	Pareve	With cRc symbol	UKD: CC2028055
13315	1-Penten-3-ol	Pareve	With cRc symbol	UKD: CC2028114
13322	T2 Pentenal	Pareve	With cRc symbol	UKD: CC2028174
13327	4-Pentenoic Acid	Pareve	With cRc symbol	UKD: CC2035115
13329	T2 Pentenoic Acid	Pareve	With cRc symbol	UKD: CC2028056
13336	T2 Pentenol	Pareve	With cRc symbol	UKD: CC2028284
13357	Phenyl Ethyl Alcohol	Pareve	With cRc symbol	UKD: CC2144731
13371	Phenyl Ethyl Hexanoate	Pareve	With cRc symbol	UKD: CC2028287
13392	3-Phenyl Propyl Propionate	Pareve	With cRc symbol	UKD: CC2028306
13448	Propionic Acid	Pareve	With cRc symbol	UKD: CC2028083
13469	N-Propyl Cinnamate	Pareve	With cRc symbol	UKD: CC2053194
13476	n-Propyl Formate	Pareve	With cRc symbol	UKD: CC2028080
13480	Propyl 2-furanacrylate	Pareve	With cRc symbol	UKD: CC2023378
13483	Propyl Heptanoate	Pareve	With cRc symbol	UKD: CC2028057
13490	Propyl Hexanoate	Pareve	With cRc symbol	UKD: CC2028109
13497	Propyl Propionate	Pareve	With cRc symbol	UKD: CC2028108
13511	d-Pulegone, Natural	Pareve	With cRc symbol	UKD: CC2028075
13693	Alpha-Terpinyl Formate	Pareve	With cRc symbol	UKD: CC2053198
13707	alpha-Terpinyl Propionate	Pareve	With cRc symbol	UKD: CC2028132
13721	Tetrahydrofurfuryl Acetate	Pareve	With cRc symbol	UKD: CC2053196

Note: The UKD is an identification number assigned by the cRc for global tracking.

**Expiration Date: 12/31/2010.**

For up-to-date certification information please visit [www.crcweb.org](http://www.crcweb.org)

cRc ID: #44

Page 12 of 17

Rabbi Sholem Fishbane  
Kashruth Administrator



**Rabbi Sholem Fishbane**  
Kashruth Administrator

# Chicago Rabbinical Council

2701 West Howard Street  
Chicago, IL 60645  
Ph (773) 465-3900 Fax: (773) 465-6929  
[www.crcweb.org](http://www.crcweb.org)

January 14, 2010

## Fontarome Chemical- Kosher when bearing cRc symbol

Total # Products on Certificate: 354

13741	Thialdine	Pareve	With cRc symbol	UKD: CC2144914
13763	Tiglic Acid	Pareve	With cRc symbol	UKD: CC2028028
13777	Tolualdehyde Glyceryl Acetal	Pareve	With cRc symbol	UKD: CC2028293
13833	2,2,4 Trimethyl 1,3 Dioxolane	Pareve	With cRc symbol	UKD: CC2028294
13861	Valeraldehyde	Pareve	With cRc symbol	UKD: CC2120438
13875	L-Valine	Pareve	With cRc symbol	UKD: CC2028786
13882	Vanillic Acid	Pareve	With cRc symbol	UKD: CC2028295
13891	Vanillin Isobutyrate	Pareve	With cRc symbol	UKD: CC2036894
13893	Vanillylamine Hydrochloride	Pareve	With cRc symbol	UKD: CC2053168
13917	Whiskey Lactone	Pareve	With cRc symbol	UKD: CC2028296
13918	WS-3	Pareve	With cRc symbol	UKD: CC2115051
13920	WS-23	Pareve	With cRc symbol	UKD: CC2036893
13924	Zestoril	Pareve	With cRc symbol	UKD: CC2028068
13934	Zingerone 93%	Pareve	With cRc symbol	UKD: CC2045884
13935	Zingrone 97%	Pareve	With cRc symbol	UKD: CC2045883
13936	Ethyl 2,4 Dimethyl Pyridine Carboxylate	Pareve	With cRc symbol	UKD: CC2028058
13937	Ethyl 3 Amino Crotonate	Pareve	With cRc symbol	UKD: CC2028059
13940	Ethyl p-Anisate	Pareve	With cRc symbol	UKD: CC2028125
13945	p-Anisaldehyde	Pareve	With cRc symbol	UKD: CC2028787
13947	Isopropyl Isovalerate	Pareve	With cRc symbol	UKD: CC2028061
13948	Alpha-Terpinyl Butyrate	Pareve	With cRc symbol	UKD: CC2053200
13955	1-(p-Methoxyphenyl)-1-Penten-3-one (Ethone)	Pareve	With cRc symbol	UKD: CC2028062

Note: The UKD is an identification number assigned by the cRc for global tracking.

**Expiration Date: 12/31/2010.**

For up-to-date certification information please visit [www.crcweb.org](http://www.crcweb.org)

cRc ID: #44

Page 13 of 17

Rabbi Sholem Fishbane  
Kashruth Administrator



**Rabbi Sholem Fishbane**  
Kashruth Administrator

# Chicago Rabbinical Council

2701 West Howard Street  
Chicago, IL 60645  
Ph (773) 465-3900 Fax: (773) 465-6929  
[www.crcweb.org](http://www.crcweb.org)

January 14, 2010

## Fontarome Chemical- Kosher when bearing cRc symbol

Total # Products on Certificate: 354

13956	5-Methyl-2-hepten-4-one	Pareve	With cRc symbol	UKD: CC2013755
13961	T3 Hexenyl Acetate	Pareve	With cRc symbol	UKD: CC2028304
13962	Hexyl Pivalate	Pareve	With cRc symbol	UKD: CC2021735
13963	Furfuryl Octanoate	Pareve	With cRc symbol	UKD: CC2028063
13971	2-Methoxybenzaldehyde	Pareve	With cRc symbol	UKD: CC2022478
13975	Acetylaldehyde (50% in ethanol)	Pareve	With cRc symbol	UKD: CC2021745
13978	Vanillyl Alcohol	Pareve	With cRc symbol	UKD: CC2013737
50000	2,3,5-Trimethylpyrazine	Pareve	With cRc symbol	UKD: CC2115338
50001	2-Acetylpyrazine	Pareve	With cRc symbol	UKD: CC2115339
50002	2,3-Dimethylpyrazine	Pareve	With cRc symbol	UKD: CC2115340
50003	2-Methoxy-(3 or 5 or 6)-Methylpyrazine	Pareve	With cRc symbol	UKD: CC2115341
50004	2-Methylthio-3 (Or 5 Or 6)-Methylpyrazine	Pareve	With cRc symbol	UKD: CC2115342
50005	2 Acetylpyridine	Pareve	With cRc symbol	UKD: CC2115343
50006	2-Acetylpyrrole	Pareve	With cRc symbol	UKD: CC2115344
50007	2-Acetylthiazole	Pareve	With cRc symbol	UKD: CC2115345
50009	4-Methyl-5(2-Acetoxy Ethyl) Thiazole	Pareve	With cRc symbol	UKD: CC2115346
50011	2-Methyl-3-Mercaptofuran	Pareve	With cRc symbol	UKD: CC2115347
50012	3,4-Hexanedione	Pareve	With cRc symbol	UKD: CC2115348
50013	5-Methylfurfural	Pareve	With cRc symbol	UKD: CC2115349
50014	Diacetyl	Pareve	With cRc symbol	UKD: CC2115350
50015	Ethyl-3-(Methylthio) Propionate	Pareve	With cRc symbol	UKD: CC2115351
50016	Methyl 3-(Methylthio) Propionate	Pareve	With cRc symbol	UKD: CC2115352

Note: The UKD is an identification number assigned by the cRc for global tracking.

**Expiration Date: 12/31/2010.**

For up-to-date certification information please visit [www.crcweb.org](http://www.crcweb.org)

cRc ID: #44

Page 14 of 17

Rabbi Sholem Fishbane  
Kashruth Administrator



**Rabbi Sholem Fishbane**  
Kashruth Administrator

# Chicago Rabbinical Council

2701 West Howard Street  
Chicago, IL 60645  
Ph (773) 465-3900 Fax: (773) 465-6929  
[www.crcweb.org](http://www.crcweb.org)

January 14, 2010

## Fontarome Chemical- Kosher when bearing cRc symbol

Total # Products on Certificate: 354

50017	4-Methyl-5-Hydroxyethylthiazole	Pareve	With cRc symbol	UKD: CC2115353
50018	4-Methyl-5-Hydroxyethylthiazole	Pareve	With cRc symbol	UKD: CC2115354
50019	4-Methyl-5-Hydroxyethylthiazole	Pareve	With cRc symbol	UKD: CC2115355
50022	2-Ethyl-3,5(6) Dimethyl Pyrazine	Pareve	With cRc symbol	UKD: CC2115356
50023	2-Methylpyrazine	Pareve	With cRc symbol	UKD: CC2115357
50024	2-Acetyl-3-Methylpyrazine	Pareve	With cRc symbol	UKD: CC2115358
50025	2-Isopropyl-4-Methylthiazole	Pareve	With cRc symbol	UKD: CC2115359
50026	2-Isobutyl-3-Methylpyrazine	Pareve	With cRc symbol	UKD: CC2115360
50027	3-Methylthio Butyl Aldehyde	Pareve	With cRc symbol	UKD: CC2115361
50028	Methyl Thiofuroate	Pareve	With cRc symbol	UKD: CC2115362
50029	2,4,5-Trimethylthiazole	Pareve	With cRc symbol	UKD: CC2115363
50031	Furfuryl Thioformate	Pareve	With cRc symbol	UKD: CC2115364
50032	2,3,5,6-Tetramethylpyrazine	Pareve	With cRc symbol	UKD: CC2115365
50033	Bis(2-Methyl-3-Furyl)Disulfide	Pareve	With cRc symbol	UKD: CC2115366
50034	2-Isobutylthiazole	Pareve	With cRc symbol	UKD: CC2115367
50035	2-Furfurylthio-3 (Or 5 Or 6)-Methylpyrazine	Pareve	With cRc symbol	UKD: CC2115368
50036	4-Methyl-5-Vinylthiazole	Pareve	With cRc symbol	UKD: CC2115369
50037	Furfural Mercaptan	Pareve	With cRc symbol	UKD: CC2115370
50038	1,6-Hexanedithiol	Pareve	With cRc symbol	UKD: CC2115371
50039	Coffee Furanone (2-methyl tetrahydrofuran-3-one)	Pareve	With cRc symbol	UKD: CC2115372
50041	Difurfuryldisulfide	Pareve	With cRc symbol	UKD: CC2115373
50042	2-Acetyl-3,5 (Or 6)-Dimethylpyrazine	Pareve	With cRc symbol	UKD: CC2115375

Note: The UKD is an identification number assigned by the cRc for global tracking.

**Expiration Date: 12/31/2010.**

For up-to-date certification information please visit [www.crcweb.org](http://www.crcweb.org)

cRc ID: #44

Page 15 of 17

Rabbi Sholem Fishbane  
Kashruth Administrator



**Rabbi Sholem Fishbane**  
Kashruth Administrator

# Chicago Rabbinical Council

2701 West Howard Street  
Chicago, IL 60645  
Ph (773) 465-3900 Fax: (773) 465-6929  
[www.crcweb.org](http://www.crcweb.org)

January 14, 2010

## Fontarome Chemical- Kosher when bearing cRc symbol

Total # Products on Certificate: 354

50043	3-Ethyl-2-Methylpyrazine	Pareve	With cRc symbol	UKD: CC2115376
50044	2-Ethyl 4-Methyl Thiazole	Pareve	With cRc symbol	UKD: CC2115377
50045	Dipropyl Disulfide	Pareve	With cRc symbol	UKD: CC2115378
50046	2,5-Dimethylpyrazine	Pareve	With cRc symbol	UKD: CC2115379
50047	2,6-Dimethylpyrazine	Pareve	With cRc symbol	UKD: CC2115380
50048	2-Methoxy-3-Iso Butyl Pyrazine	Pareve	With cRc symbol	UKD: CC2115381
50049	2-Methoxy-3-Secbutylpyrazine	Pareve	With cRc symbol	UKD: CC2115382
50051	3-Methylthio Hexanol	Pareve	With cRc symbol	UKD: CC2121309
50052	2-Acetylfuran	Pareve	With cRc symbol	UKD: CC2115383
50053	3 Acetylpyridine	Pareve	With cRc symbol	UKD: CC2115384
50054	Acetoin	Pareve	With cRc symbol	UKD: CC2115385
50055	2-Methyl Tetrafulan-3-Thiol	Pareve	With cRc symbol	UKD: CC2115396
50056	2-Acetyl-3-Ethylpyrazine	Pareve	With cRc symbol	UKD: CC2115390
50057	2-Methyl-3-Ethyl Pyrazine	Pareve	With cRc symbol	UKD: CC2115386
50086	8-Methylnonanoic Acid (MNA)	Pareve	With cRc symbol	UKD: CC2119147
50090	N-Methyl-2-Pyrrolidinone (NMP)	Pareve	With cRc symbol	UKD: CC2123357
50091	4-HYDROXY-3-METHYOXYBENZYL ALCOHOL	Pareve	With cRc symbol	UKD: CC2119104
50100	Bis (Methylthio) Methane	Pareve	With cRc symbol	UKD: CC2123353
50135	3,4 Hexanedione, 96.00%	Pareve	With cRc symbol	UKD: CC2145535
70001	Strawberry Aldehyde (Aldehyde C16)	Pareve	With cRc symbol	UKD: CC2141585
70002	Gamma-Hexalactone	Pareve	With cRc symbol	UKD: CC2144910
70003	Delta-Dodecalactone	Pareve	With cRc symbol	UKD: CC2115046

Note: The UKD is an identification number assigned by the cRc for global tracking.

**Expiration Date: 12/31/2010.**

For up-to-date certification information please visit [www.crcweb.org](http://www.crcweb.org)

cRc ID: #44

Page 16 of 17

Rabbi Sholem Fishbane  
Kashruth Administrator



**Rabbi Sholem Fishbane**  
Kashruth Administrator

# Chicago Rabbinical Council

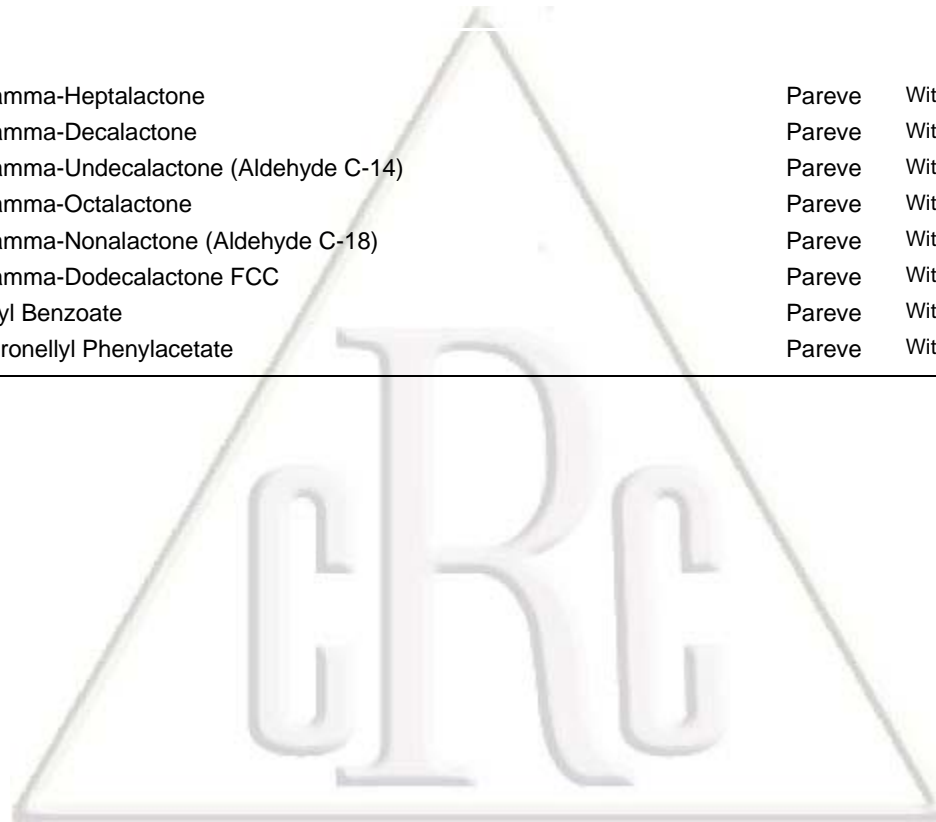
2701 West Howard Street  
Chicago, IL 60645  
Ph (773) 465-3900 Fax: (773) 465-6929  
[www.crcweb.org](http://www.crcweb.org)

January 14, 2010

## Fontarome Chemical- Kosher when bearing cRc symbol

Total # Products on Certificate: 354

70004	Gamma-Heptalactone	Pareve	With cRc symbol	UKD: CC2137242
70005	Gamma-Decalactone	Pareve	With cRc symbol	UKD: CC2137243
70006	Gamma-Undecalactone (Aldehyde C-14)	Pareve	With cRc symbol	UKD: CC2137244
70007	Gamma-Octalactone	Pareve	With cRc symbol	UKD: CC2137246
70008	Gamma-Nonalactone (Aldehyde C-18)	Pareve	With cRc symbol	UKD: CC2137247
70009	Gamma-Dodecalactone FCC	Pareve	With cRc symbol	UKD: CC2137196
90007	Allyl Benzoate	Pareve	With cRc symbol	UKD: CC2015198
90126	Citronellyl Phenylacetate	Pareve	With cRc symbol	UKD: CC2031965



Note: The UKD is an identification number assigned by the cRc for global tracking.

**Expiration Date: 12/31/2010.**

For up-to-date certification information please visit [www.crcweb.org](http://www.crcweb.org)

cRc ID: #44

Page 17 of 17

Rabbi Sholem Fishbane  
Kashruth Administrator